

ORACLE COLLABORATION SUITE 10g MAIL

ORACLE MAIL

KEY FEATURES:

- Uses Oracle Database 10g to manage and store email, voicemail & fax messages
- Open standards support
- Cross platform support such as Linux
- Reliable and scalable distributed architecture
- Server-side filters
- Mail store virus scrubbing
- Desktop, web, wireless and voice access
- PL/SQL and Java integration
- High availability features for disaster recovery
- Multi-threaded architecture
- Centralized administration
- Backup and restore of individual user mailboxes
- SSL and X.509 certificate support

KEY BENEFITS:

- **Unparalleled scalability and security**, using the Oracle10g Database to store and process messages of all types: voice, email and fax.
- **Easy to manage** through the centralized administration of Oracle Enterprise Manager
- **No barriers to access** with standards-based support for any IMAP or POP client, plus Unified Messaging desktop support via Oracle Connector for Outlook, and rich browser-based support via the D-HTML Oracle Web Access client
- **Customize and integrate** by mail-enabling your business applications with PL/SQL and Java APIs

Oracle Mail uses the highly scalable and reliable Oracle Database 10g as a message store for email, voicemail, and fax messages, taking advantage of Oracle's core competencies in providing access to, and securely storing and managing all types of information. Oracle Mail provides message delivery, Internet standards-based client access, Outlook support through Oracle Connector for Outlook, voicemail, rich web access using advanced Dynamic-HTML technology and wireless access.

BETTER BUILT MESSAGING FROM THE GROUND UP

Oracle Mail provides a true unified messaging infrastructure by storing all messages – including emails, voicemails, and faxes – in a single Oracle10g Database. Oracle10g Database, the world's leading information management platform, enables Oracle Mail to offer unmatched data availability, data integrity, short recovery time and fault-tolerance capabilities, while eliminating the need to synchronize or administer multiple stores. Oracle Mail also takes advantage of the Oracle10g Database's Real Application Clusters, multi-threading, parallel processing, high availability support, and high performance so thousands of users can run with rapid response times and without the system going down.

Robust, Reliable and Scalable Architecture

Oracle Mail is designed to grow to almost any size while maintaining its performance and ease of administration. Customize your Oracle Mail system based on the number of messages you need to store, how many users will access the system under peak loads, and how many messages will be sent and received over a period of time – our unique distributed email architecture can support thousands of users on a single piece of hardware. Create a two-tier system with a single host supporting a few thousand users, or a three-tier system where the protocol access servers are separated from the message database supporting tens of thousands of users. The Oracle Mail architecture allows you to add hardware at any tier, expanding to support virtually an unlimited number of users.

Secure, Customizable and Easy to Manage

The Oracle Mail Server features a number of features that ensure a messaging environment that meets the needs of today's organizations:

- Oracle Mail offers built-in and customizable server side filters that can be applied to a wide range of mail events, and APIs that enable applications to directly manipulate stored messages as well as create MIME-standard outgoing messages.
- Oracle Mail is integrated with Oracle Text to allow message bodies and unzipped attachments to be indexed and later searched for text strings, themes, gists, and formatting such as highlight and markup.

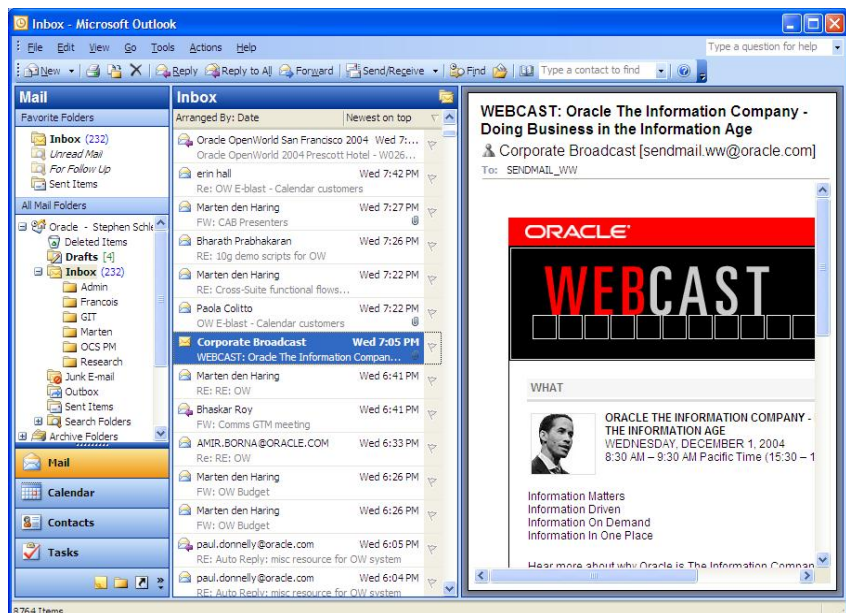
- Oracle Mail virus scanning and protection includes a tool for quarantining messages suspected of virus infection in, and third party anti-virus scanning of mail stores, along with inbound and outbound mail.
- Oracle Mail routing control capabilities include preventing users and domains from flooding the system with unwanted messages and preventing the system from accepting messages from unwanted domains while still accepting mail from specified trusted users within those domains.
- Oracle Collaboration Suite also provides administrators with a tool to backup and restore individual users' mailboxes without having to restore the entire mail store.

FLEXIBLE ACCESS TO YOUR MAIL

Oracle Mail is designed with the idea that there should be no barriers to access, supporting a wide range of work styles to enable an individual to use the messaging client of their choice. Users can opt to use any IMAP or POP client such as Netscape Messenger, Mozilla Thunderbird or Microsoft Outlook Express. Oracle Mail also supports desktop email access through Oracle Connector for Outlook, and browser-based access through Oracle Web Access. Additionally, through Oracle Mobile Access, critical mail can be accessed through any wireless device or phone while away from the office.

Oracle Connector for Outlook for Unified Messaging

Oracle Connector for Outlook enables organizations to offer their users access to unified messaging functionality – including email, voicemail, fax, calendar, contacts, directory and wireless services – through the convenience of the user-friendly Outlook interface. And with the ability to access one Inbox for *all* the messages you receive, you benefit from easier retrieval, storage, search and forwarding, and ultimately increased productivity through better organization and faster follow-up.



Oracle Connector for Outlook's unified Inbox

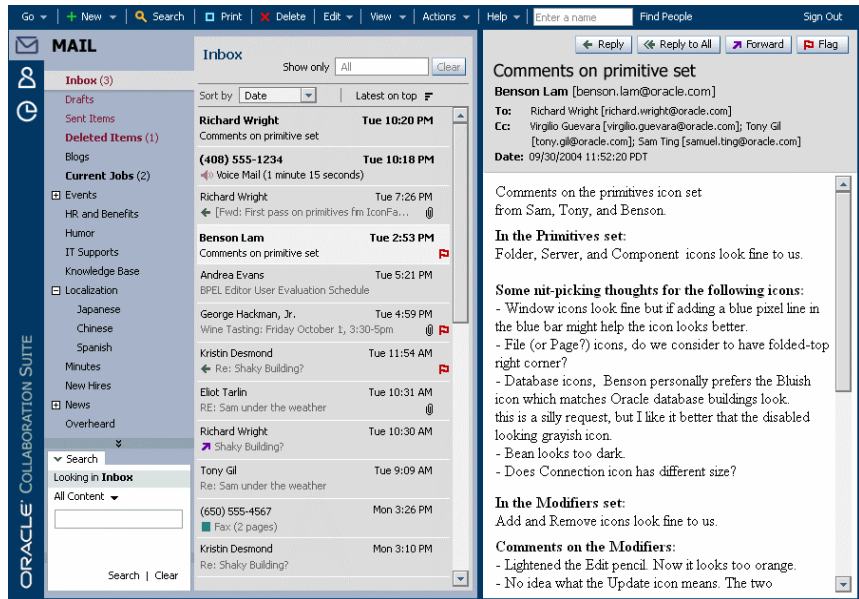
ORACLE MAIL**RELATED PRODUCTS AND SERVICES:**

The following products are available as part of Oracle Collaboration Suite:

- Oracle Calendar
- Oracle Voicemail & Fax
- Oracle Mobile Access
- Oracle Real-Time Collaboration
- Oracle Content Services

Oracle Web Access for Email, Contacts and Directory

The new Oracle Web Access client brings together user-friendly design with a rich feature set to offer a desktop like experience in a browser-based solution. Incorporating Dynamic-HTML technology, Oracle Web Access enables desktop-like ease of use through drag and drop functionality. And it's fast – with the ability to load your entire Inbox in a few seconds, or search for items in email headers or body with just a few keystrokes. Oracle Web Access supports standard web browsers, including Internet Explorer, Netscape Navigator and Mozilla Firefox.



Oracle Web Access' user-friendly interface offers desktop-like functionality

For more information

To see what's new in the 10g release of Oracle Mail, see the Oracle Mail 10g Overview at:

www.oracle.com/technology/products/oemail/index.html